



**PEMPL**

PRIYAA EXPANDED MESH PVT. LTD.

---

*World of architectural Mesh*

---



# COMMUNICATE WITH EXPANDED MESH

Yes! With expanded mesh. Photos and TV filmage where expanded mesh is in the spotlight. The star. The story we're about to tell you is thanks to the creativity of the designers with whom we've worked. Enjoy!

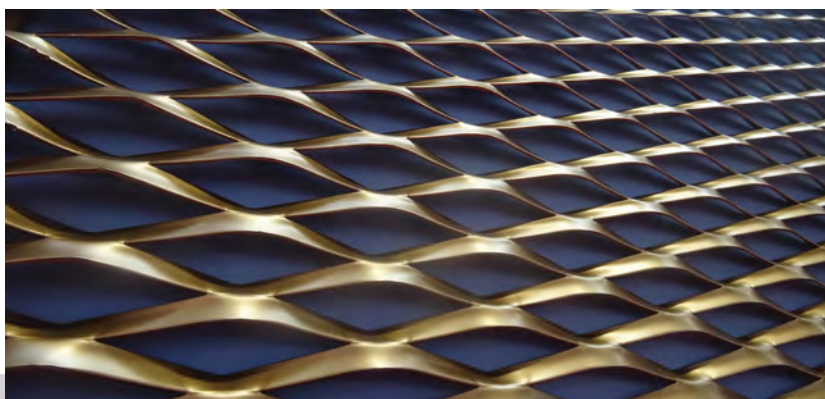
## Sparkling solutions

Not just metaphorically speaking. See how the flat and curved surfaces attract your attention and enhance the setting. Expanded mesh adds extra value to each project; flashes, reflections, transparency, shadows and shifting light. Not usual flat surfaces. Pleasing and intriguing, yet functional, architectural lighting.

Specified for many iconic buildings around the world, expanded metal facade/sunscreen Mesh has become a critical tool for architects and designers not only practical but eye-catching and kinder on environment, too.

The structure of Expanded Metal Facade Mesh/Sunscreen Mesh aids the disruption of sound waves, deadening noise and reduction of echo. These practical features of the material in conjunction with its already proven architectural features make it perfect for decorative ceiling tiles and acoustic panels and are chosen by designers and architects for their beauty and striking appearance.

In terms of sheer visual impact, Expanded Metal cladding systems are hard to beat. Combining the best of modern metallic materials, unique patterns and a range of finishes with practical solar and decorative properties, such systems allow architects to ensure any new building stays at the very cutting edge of modern building materials technology.



In terms of refurbishment, dull, grey, concrete surfaces can be clad to revamp buildings and send them hurtling into the 21st century.



# COMMUNICATE WITH EXPANDED MESH

Yes! With expanded mesh. Photos and TV filmage where expanded mesh is in the spotlight. The star. The story we're about to tell you is thanks to the creativity of the designers with whom we've worked. Enjoy!

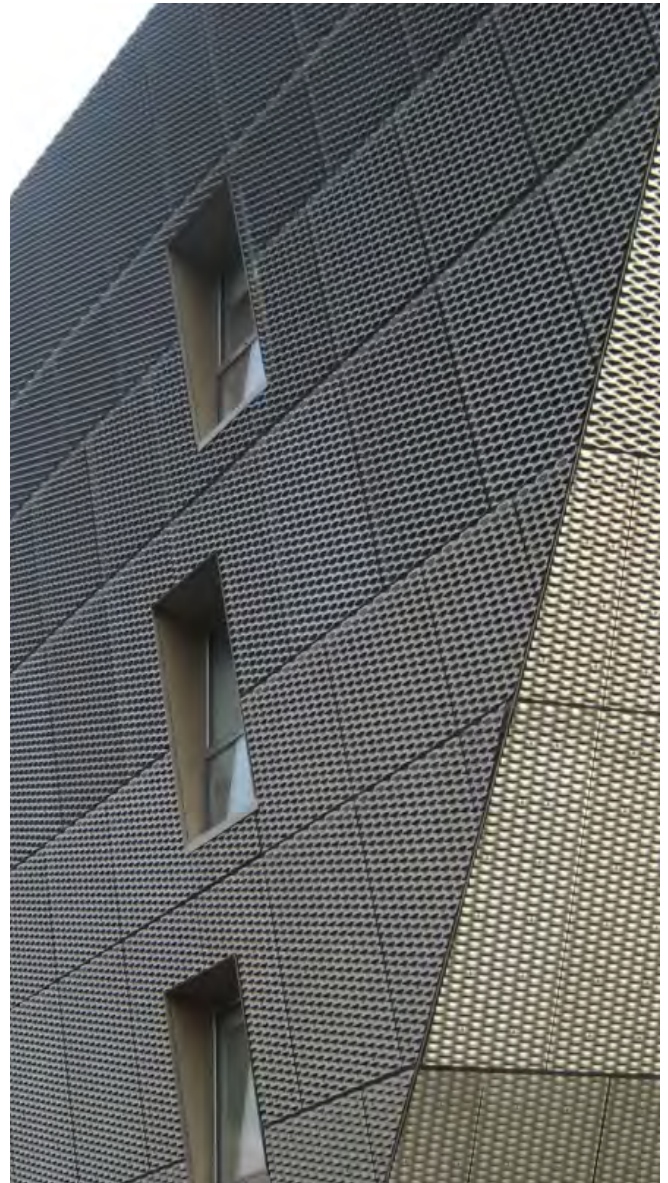
## Sparkling solutions

Not just metaphorically speaking. See how the flat and curved surfaces attract your attention and enhance the setting. Expanded mesh adds extra value to each project; flashes, reflections, transparency, shadows and shifting light. Not usual flat surfaces. Pleasing and intriguing, yet functional, architectural lighting.

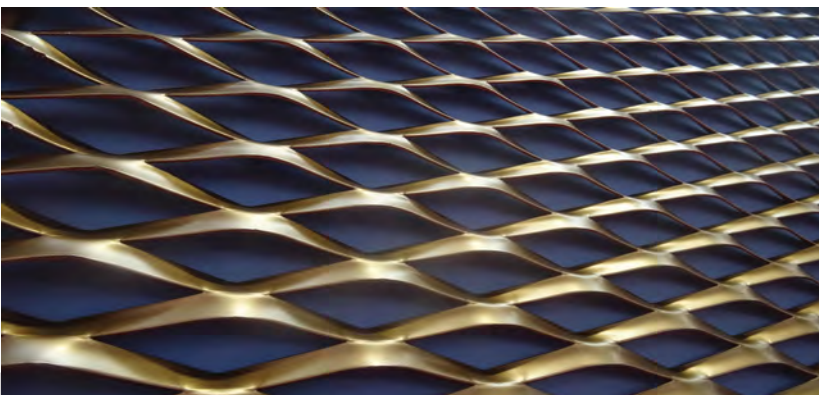
Specified for many iconic buildings around the world, expanded metal facade/sunscreen Mesh has become a critical tool for architects and designers not only practical but eye-catching and kinder on environment, too.

The structure of Expanded Metal Facade Mesh/Sunscreen Mesh aids the disruption of sound waves, deadening noise and reduction of echo. These practical features of the material in conjunction with its already proven architectural features make it perfect for decorative ceiling tiles and acoustic panels and are chosen by designers and architects for their beauty and striking appearance.

In terms of sheer visual impact, Expanded Metal cladding systems are hard to beat. Combining the best of modern metallic materials, unique patterns and a range of finishes with practical solar and decorative properties, such systems allow architects to ensure any new building stays at the very cutting edge of modern building materials technology.

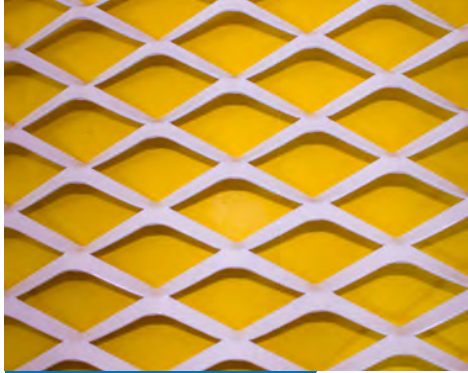


In terms of refurbishment, dull, grey, concrete surfaces can be clad to revitalize buildings and send them hurtling into the 21st century.

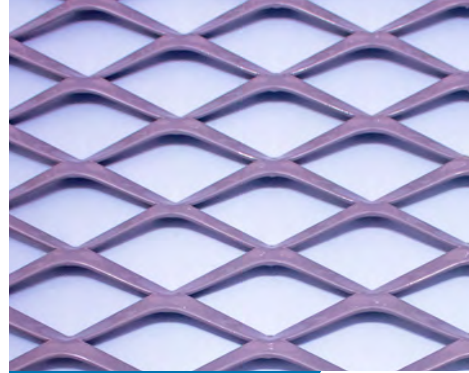




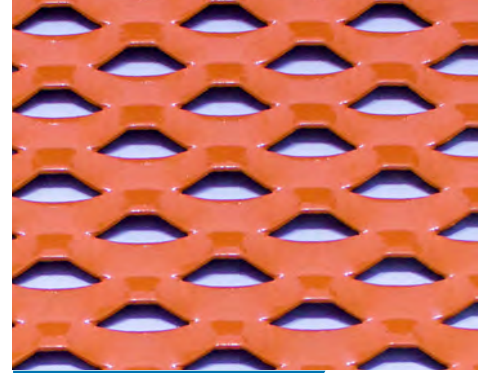
# Expanded Mesh Product & Technical Details



PEMPL - 01



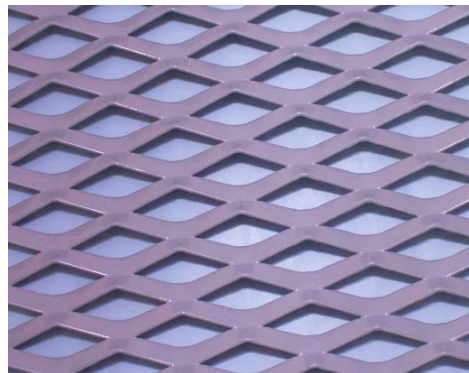
PEMPL - 02



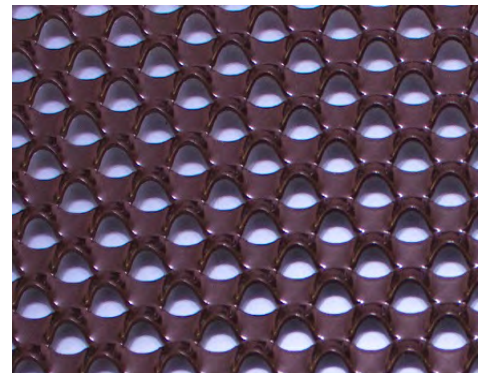
PEMPL - 03



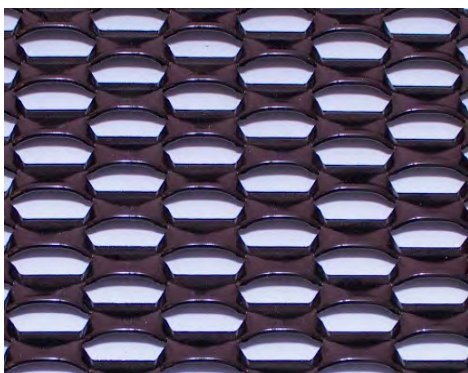
PEMPL - 04



PEMPL - 06



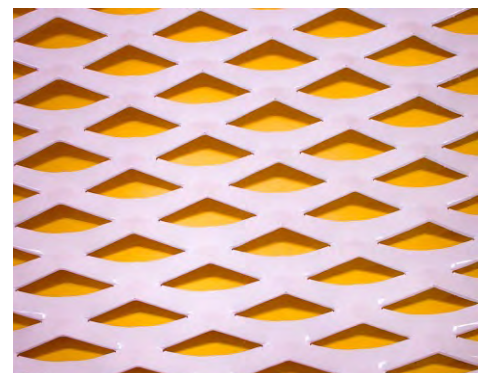
PEMPL - 09



PEMPL - 10



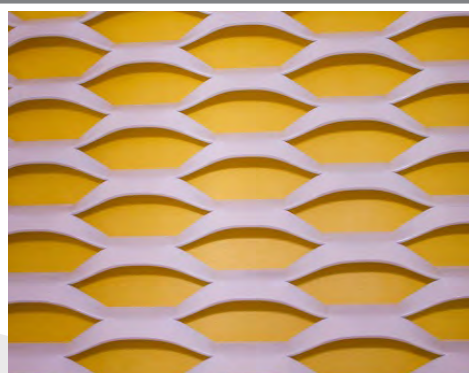
PEMPL - 11



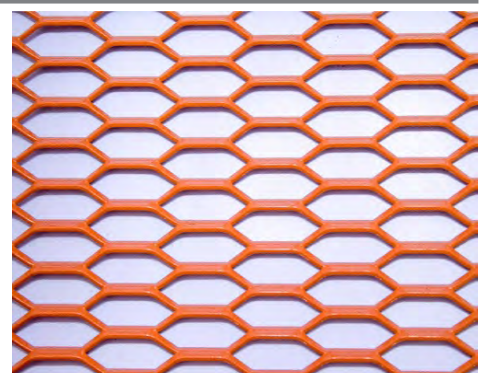
PEMPL - 14



PEMPL - 15



PEMPL - 16



PEMPL - 17

# PRODUCTS & TECHNICAL DETAILS

PRODUCT	MATERIAL ALUMINIUM ALLOY	THK.	SWM	LWM	STRAND	COVERAGE	OPENING	WT OF MESH PER SQUARE FEET OF	WT OF MESH PER SQUARE FEET OF	MESH TYPE
MARK NO.	USA (AA) / INDIAN STD	mm	mm	mm	mm	%	%	2 MM THK (KGS)	1.5 MM THK (KGS)	
PEMPL - 01	1100 / 19000	1.5	40	105	10	50	50	0.248	0.186	DIAMOND
PEMPL - 02	1100 / 19000	1.5	37	77	9.3	50	50	0.253	0.19	DIAMOND
PEMPL - 03	1100 / 19000	1.5	21	43	9.3	89	11	0.507	0.38	PYRAMID
PEMPL - 04	1100 / 19000	1.5	53	136	14	53	47	0.267	0.2	DIAMOND
PEMPL - 05	1100 / 19000	1.5	60	194	22.5	75	25	0.372	0.279	DIAMOND
PEMPL - 06	1100 / 19000	1.5	24	63	8	67	33	0.336	0.252	DIAMOND
PEMPL - 08	1100 / 19000	1.5	34	91	10	59	41	0.298	0.223	DIAMOND
PEMPL - 09	1100 / 19000	1.5	17	25	6.6	78	22	0.507	0.38	1/2MOON
PEMPL - 10	1100 / 19000	1.5	12	36	5.5	92	8	0.467	0.35	LOUVER
PEMPL - 11	1100 / 19000	1.5	7.5	45	3.8	101	-1	0.511	0.383	LOUVER
PEMPL - 12	1100 / 19000	1.5	13	27	2	31	69	0.155	0.116	HEX
PEMPL - 13	1100 / 19000	1.5	47	190	22.3	95	5	0.479	0.359	DIAMOND
PEMPL - 14	1100 / 19000	1.5	37	77	12.5	68	32	0.34	0.255	DIAMOND
PEMPL - 15	1100 / 19000	1.5	37	196	15	81	19	0.409	0.307	LOUVER
PEMPL - 16	1100 / 19000	1.5	35	115.5	10.7	61	39	0.309	0.232	LONG HEX
PEMPL - 17	1100 / 19000	1.5	13	50.4	2.8	43	53	0.219	0.164	LONG HEX
PEMPL - 25	1100 / 19000	1.5	51.5	161	24	93	7	0.471	0.353	LONG HEX

## Availability

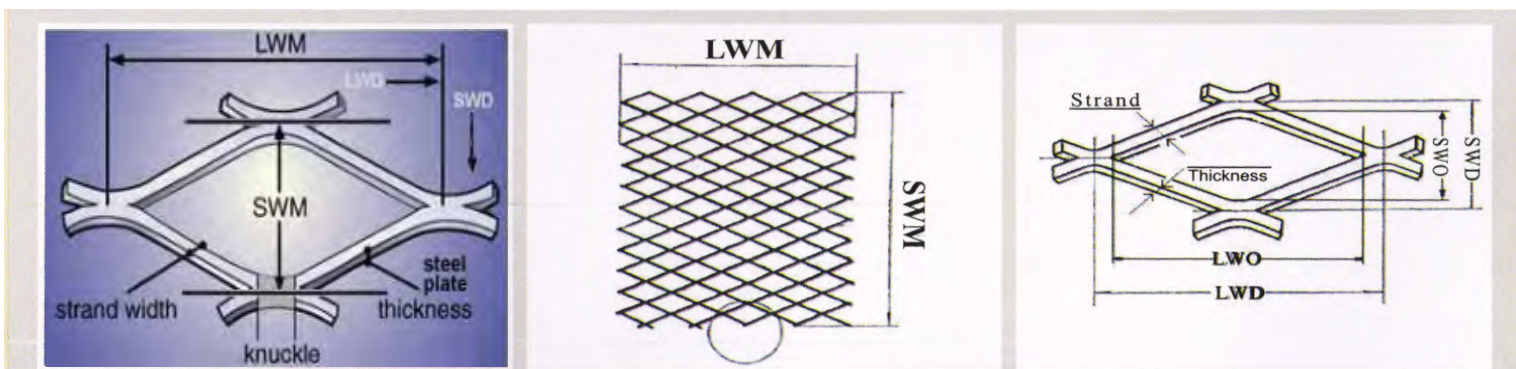
### Expanded Metal Mesh & Building's Facades

Material	:	AL., SS, M.S, G.I
Thickness	:	0.5 to 6 mm
Width	:	300 to 1500 mm
Lenght	:	500 to 10,000 mm
SWM	:	6 to 60 mm
LWM	:	16 to 196 mm
Strand width	:	1 to 24 mm

### Expanded Metal Grating

Material	:	AL., SS, M.S, G.I
Thickness	:	3.00 to 6 mm
Width	:	300 to 1500 mm
Lenght	:	600 to 6000 mm

## Details & Dimensions of Expanded Metal Mesh





# PEMPL

PRIYAA EXPANDED MESH PVT. LTD.

*World of architectural Mesh*

— MANUFACTURER OF EXPANDED MESH & GRATINGS —

## Contact Details

N B Singh : 9096 430 973 / 9324 292 638  
E : nbsingh@pempl.com

Rakesh Panchal : 9820 553 405 / 9892 232 544  
E : rakesh@pempl.com

Visit us : [www.pempl.com](http://www.pempl.com)

## Office & Factory

Plot No. 4, Survey No. 137/168, Asangaon, Taluka-Shahapur, District - Thane 421 601,  
On Mumbai Nasik Highway, Opp. Hotel Parivar Garden